

Convict Bay #59

\$420,000

59 Convict Bay Lane, Town of St. George GE05

- 2 Bedrooms
- 2 1/2 Bathrooms
- 1,050 sq. ft.



Waterfront property on St. George's Harbour with a private beach are at your doorstep from this spacious and airy condo home.

As a privately situated end unit, this home benefits from an eastern wall of windows and is a larger width unit than other units. The open-plan living and dining room flows out onto a private verandah immediately adjacent to the beach and water.

A nicely appointed kitchen and powder room extend from the living spaces. On the upper level is a master bedroom with ensuite bathroom and private balcony from which to enjoy the water views. There is a second bedroom, a full bathroom and large laundry cupboard.

Other amenities include a dock for temporary use, small gym, exterior storage and just minutes' walk into the Town of St. George's.



PROPERTY FEATURES

- Tile Flooring
- Open-Plan Living & Dining Rooms
- Spacious Bedrooms
- Large Outdoor Patio
- Large Storage Locker
- Beach Access
- Dock Access
- Communal Gym
- Harbour Views
- Residential 1 Zoning
- Assessment #: 060027614
- ARV - \$29,400
- Land Tax: \$845 / annum
- \$1,919 condo fees / quarter

MATT SHRUBB

matt@shrubbrealty.com
 (441) 535-6288
 (441) 292-4990

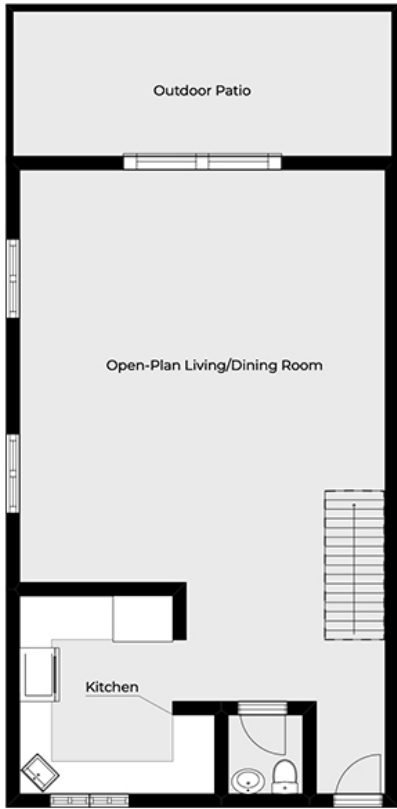


shrubbrealty.com

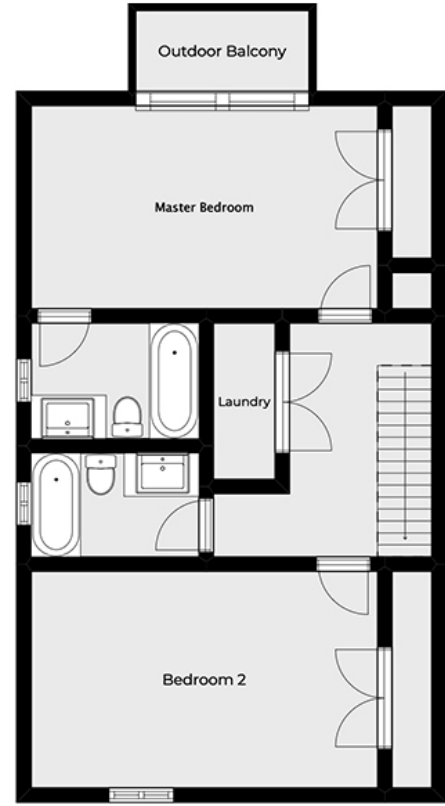


Convict Bay #59 Floor Plans

59 Convict Bay Lane, Town of St. George GE05



Lower Level



Upper Level

Room	Dimensions	Square Footage
Upper Level		
Master Bedroom	16' x 10'	160 sq. ft.
Second Bedroom	16' x 10'	160
Master Bathroom	7'10" x 5'4"	41.75
Second Bathroom	7'10" x 4'9"	37.21
Lower Level		
Powder Room	3'10" x 4'1"	15.95
Upper Landing	10'3" x 11'3"	115.31
Kitchen	7'9" x 10'	77.5
	2'1" x 4'1"	8.5
Living / Dining	18'6" x 21'5"	396.2
Foyer		40 appr

Please Note:

Measurements provided as guideline only and are not to be relied upon as accurate.

Total Internal: 1,052.42 Square Feet